

# Amadeus Property Management Advanced

---

Consolidate and enhance your property management ecosystem with simple “a la carte” integrations, ease of use, and predictable costs.

---

## The Fragmented Property Management Landscape

Independent and mid-chain hoteliers today struggle with widespread property management challenges that detract from their ability to drive revenue and deliver excellent guest experiences. From fragmented hotel technology that makes solution integration difficult, to outdated user interfaces and unpredictable pricing models, the Property Management System (PMS) is often an area of opportunity for greater efficiency.

## Connecting the Dots Across Your Properties

Amadeus Property Management Advanced brings newfound efficiency to the PMS equation. Our comprehensive cloud-based PMS offers robust integration capabilities to seamlessly connect systems across your property or properties. And with an intuitive, simple user interface and attractive, all-inclusive pricing, Amadeus Property Management Advanced delivers efficient and reliable property management at a predictable cost to keep your business running smoothly and profitably.

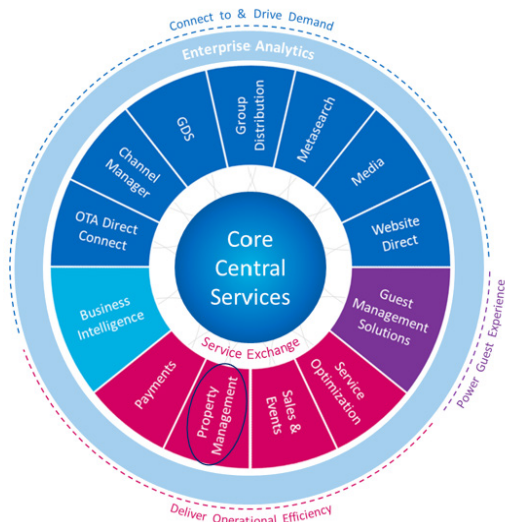
## With multiple systems to integrate and manage, how do you ensure efficient and secure operations across your properties?

### Leverage Simple Integration Capabilities

Gain access to an “a la carte” menu of solution integrations to ensure your on-property, distribution, business intelligence and other systems work together seamlessly to increase efficiency, boost revenue, and deliver excellent guest experiences.

#### Amadeus Solutions

Easy “plug and play” connections for the complete portfolio of Amadeus Hospitality solutions, including iHotelier CRS and Booking Engine, Guest Management Solution, Service Optimization, Sales & Catering, and Business Intelligence.



#### Partner Solutions

Simple one-click connections to more than 350 partner systems from the Amadeus Marketplace across distribution, Point of Sale (POS), payments, building/energy management, Customer Relationship Management (CRM), housekeeping, revenue management, and more.



### Rely on the Power of the Cloud

The cloud power of Microsoft Azure ensures your PMS remains reliable, scalable, and secure. Due to the cloud design and architecture of Amadeus Property Management Advanced, Amadeus provides regular background upgrades every two weeks without any operational interruptions. The latest features are delivered instantly, to all customers.



### Become Flexible and Future Proof

Don't wait for end-of-day reports to update mission critical systems. Ensure your operations are always up to date with the latest business intelligence through real-time reporting and analytics from more than 250 standard reports. Leverage open APIs and “code your own solution” capabilities to connect to custom solutions as needed.



## Maintain Security and Compliance

Rest assured that your company and guest data will remain secure and compliant with all international requirements. Protect your business from potential liability and hacking attempts with the security and compliance features of Amadeus Property Management Advanced.

### Secure storage and data encryption

No credit card details are stored in any Amadeus product. Instead, all card details are encrypted and held in a secure offsite vault, leaving only placeholder tokens behind in your PMS.

### Multi-Factor Authentication

Prevent fraudulent logins to the PMS by requiring multiple authentication steps through secure services.

### Reduced Hacking Risks

The encrypted tokens in APMA are of no commercial value to thieves whatsoever, and Amadeus systems are therefore uninteresting to hackers.



## Enable Multi-Property Support

As an independent hotel brand with multiple properties, it can be difficult to fill your hotel rooms at the rates that deliver the most profit. Amadeus Property Management Advanced lets you share information across your hotels, provides integrated channel management, and helps streamline the sales process.

### Centralized guest data

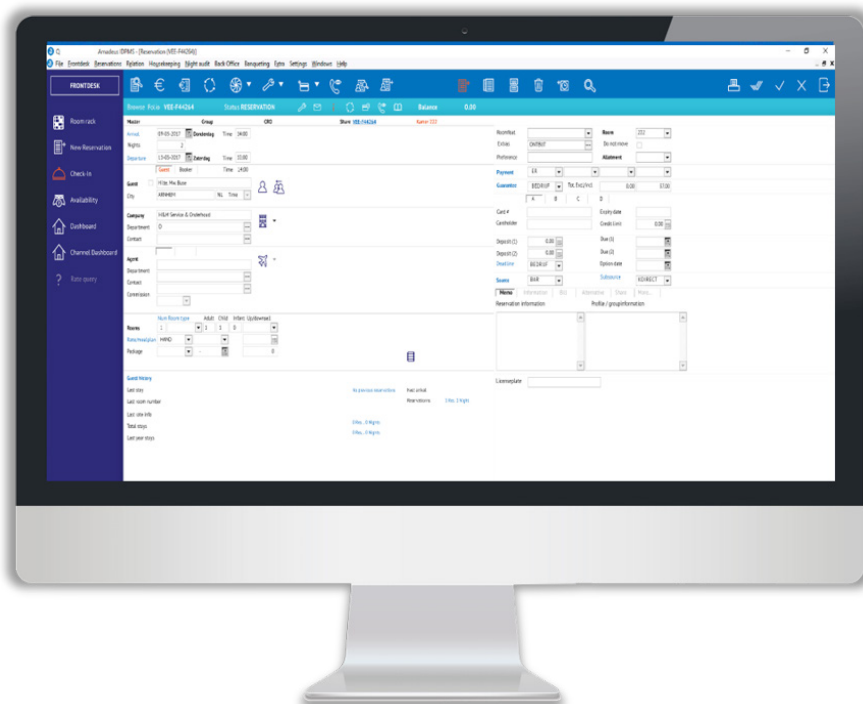
Enable access to a shared guest profile database to anticipate guest needs across properties and build brand loyalty.

### Standardized operations

Use a consistent PMS across your properties to develop and maintain operational and service standards, a key element in defining and refining your brand.

### Global Logins

Designated employees can access data across properties without having to log in and out of each hotel's system.



## Solution Requirements

### Portal access

For access to the APMA portal users will need an internet connection and a browser on a Windows PC, Mac, Chromebook, tablet or mobile device. A mobile device is also needed for the Multi-Factor Authentication solution access requirements.

### PMS access

PMS access requires a device capable of running a Remote Desktop session (e.g. Windows PC, Mac, Chromebook, iPad Pro). Minimal Requirements are a high-speed internet connection and a minimum screen resolution of 1280 x 1024.

### Orange Box

For specific hotel interfaces that are working within the hotel network or rely on a serial connection, an Amadeus Orange Box needs to be obtained. The Orange Box will handle connections between Hotel based systems and APMA.

### Multi-Factor Authentication

For Multi Factor Authentication, a mobile phone number per user is needed.

### Email

To be able to send emails from the PMS, a mail account with SMTP server and credentials (for example, Microsoft Office365) are needed. As the PMS will be unable to process Multi-Factor Authentication, this option will have to be disabled in the email account. Alternatively, an App-Password can sometimes be set in the email account.

### Firewall

Please note that all outbound network and internet connections will be blocked (e.g. SMTP mailing) unless the designated ports are opened in the firewall.

Let's  
shape the future  
of travel

Find out more

For further information, visit [amadeus-hospitality.com](https://amadeus-hospitality.com) or speak to your Amadeus Account Manager today.

Find Us On:

